

XYLOFLOORING

URBAN HERRINGBONE LAMINATE



Herringbone (A & B)



Ladder (A - fully glued)



Shipdeck (A - glue short side)



Mosaic (A & B - fully glued)

Made in Belgium

LOOKING FOR MORE INFO?



UNDERLAYS



INSTALLATION



FLOOR HEATING



CARE & MAINTENANCE



WARRANTY



www.xyloflooring.com

XYLOFLOORING

URBAN HERRINGBONE LAMINATE



Made in Belgium

8 mm
thick

504
x84
mm

4
bevel

Real
Wood
Structure

Chateau
Loc

Class
32
AC4

Lifetime
Warranty
Residential

5 years
Warranty
Commercial

24

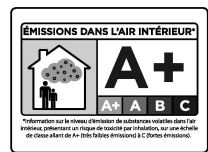
1,02 m² 504 L x 84 W x 8 TH (mm)
10,94 ft² 19,84 L x 3,31 W x 0,31 TH (inch)



EN14041
CE
DOP: 170-DL3213-1



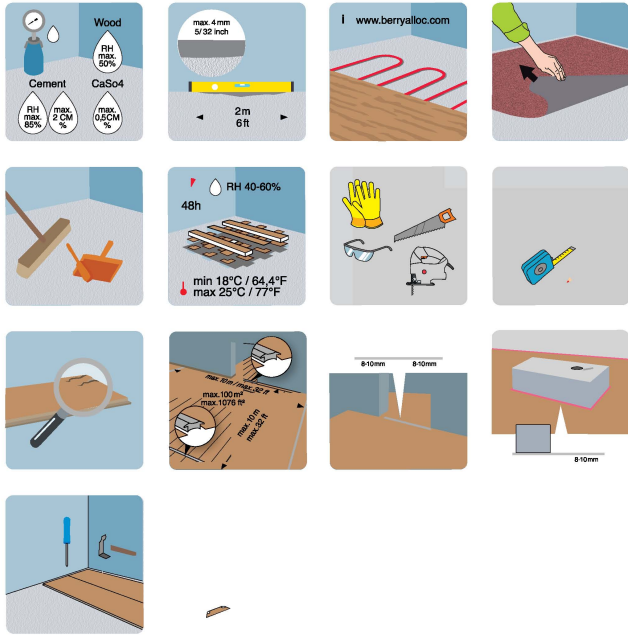
Industrielaan 100, B-8990
Menen Belgium
Laminated floor covering
EN13329



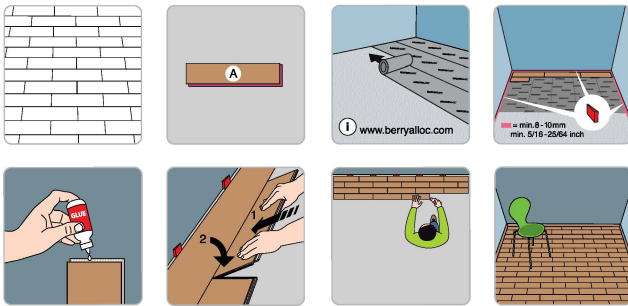
www.xyloflooring.com

URBAN

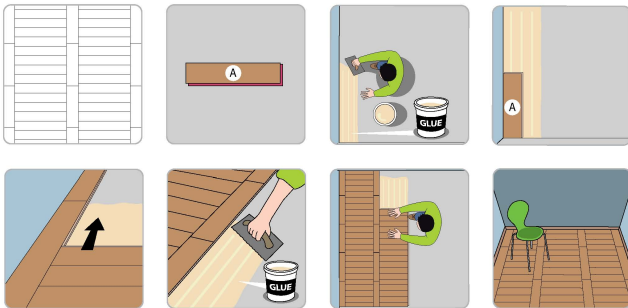
General instructions



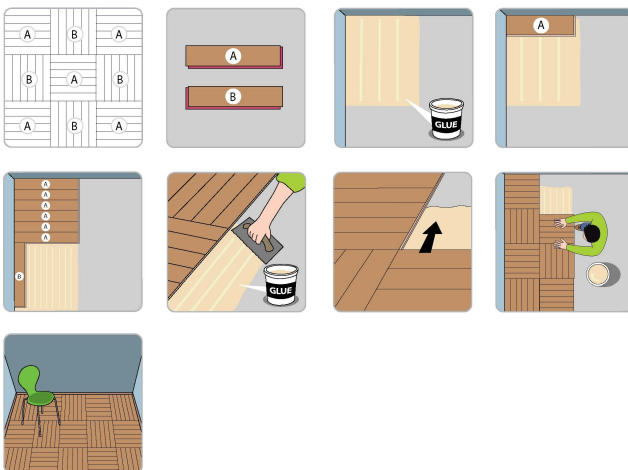
Shipdeck Installation



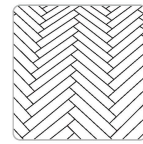
Ladder Installation



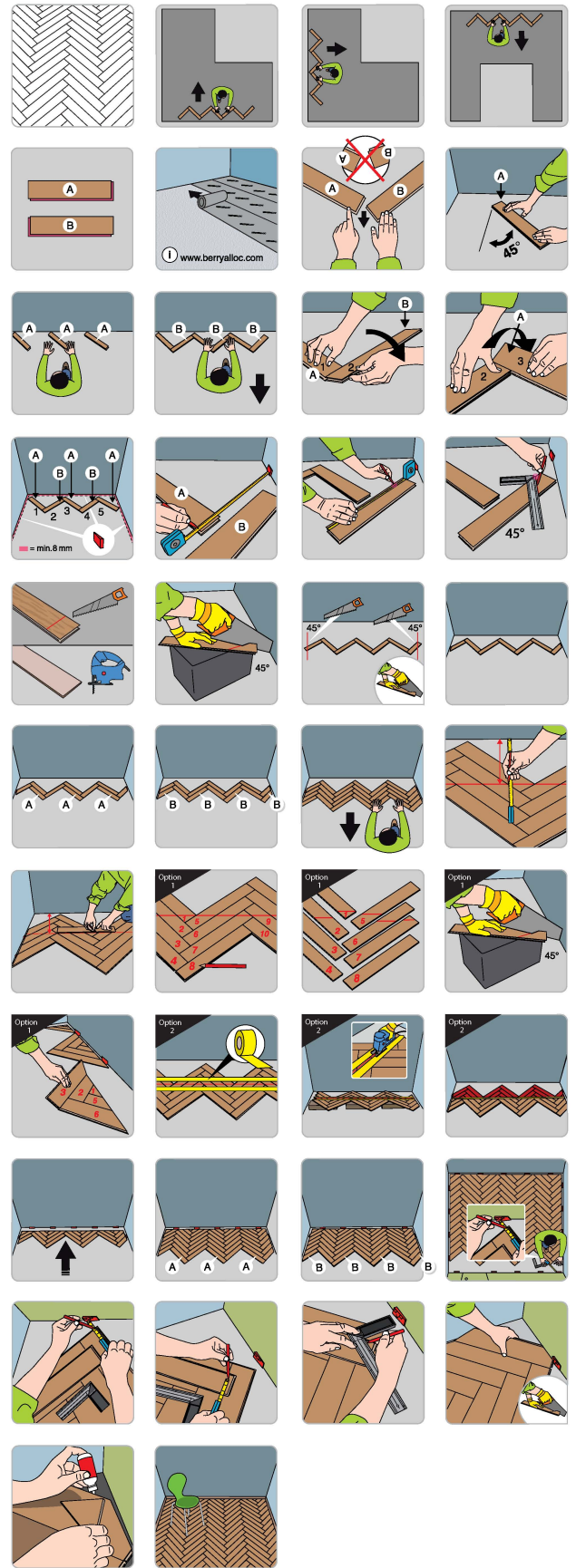
Mosaic Installation



Herringbone



Installation



Maintenance

